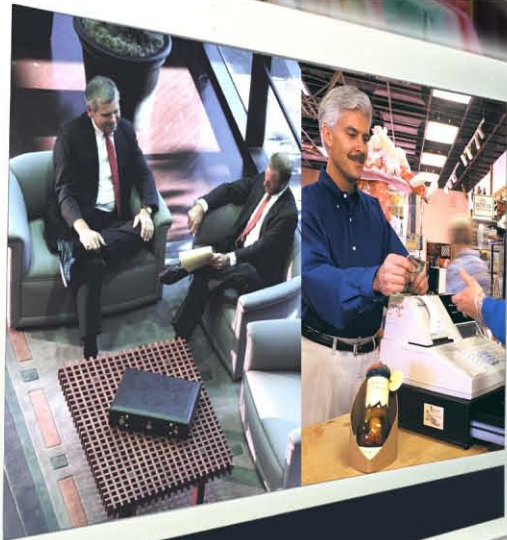


The A.R.T of Display

(Advanced Resolution Technology)



Clear Image with High Resolution

Picture By Picture

Ultra Brightness with excellent Color reproduction



TFT LCD PUBLIC VIEW MONITOR

Built-in High Resolution Camera

- Ultra brightness with excellent Color reproduction
- Professional TFT-LCD monitor with Vari-focal (4-9mm) camera
- Built-in Light Sensor for Sleep mode
- DC12V Output Connector for external camera
- Three Video Output Connector
- Powerful Audio Sound: 2.5W X 2
- Motion Detection Capability
- Multiple Viewing function with PIP/PBP display
- On screen menu supporting 6 languages (English, German, French, Italian, Spanish, Polish)
- Long life BLU
- Rugged Metal design
- Remote Controller (Included)

Picture In Picture

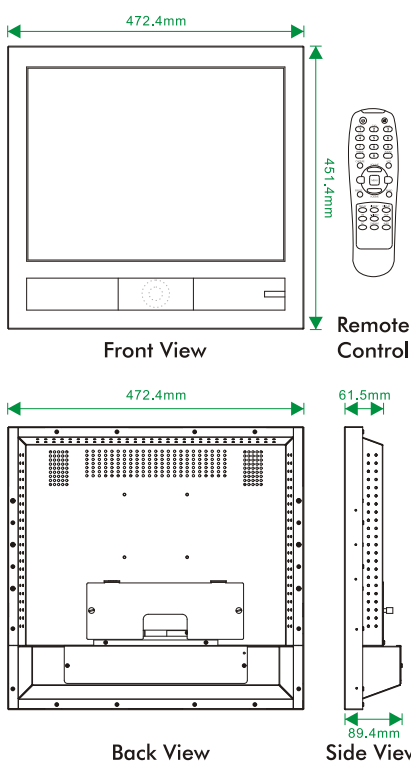
SYSCOM

Specifications

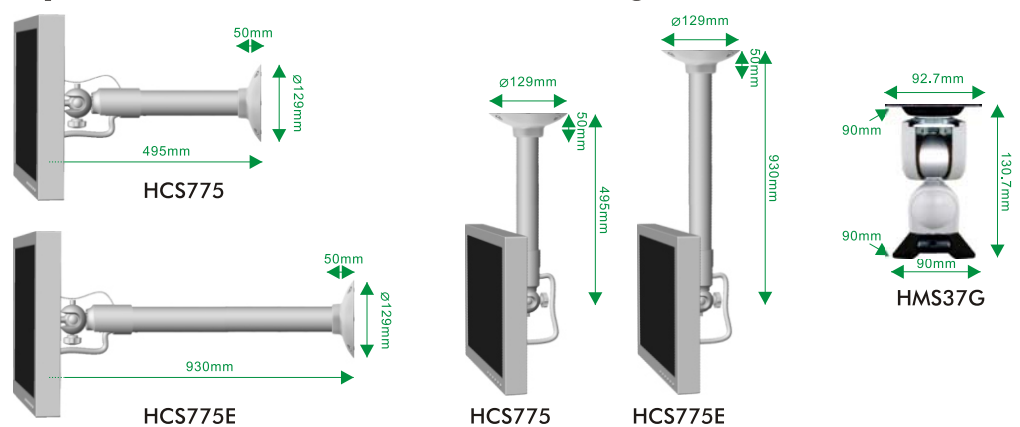
Items	Model	HMM201SBN/P
Input	Display Source	Built-in Camera Video + External Camera Video
LCD	LCD Panel	20.1 inches (510.54mm) TFT LCD Panel
	Active Display Area	408.0mm (H) x 306.0mm (V)
	Pixel Format	640 (H) x 480 (V) , RGB vertical stripe
	Pixel Pitch	0.6375mm x 0.6375mm
	Color Depths	8 Bit / 16.7M Colors
	Contrast Ratio	400:1 (Typical)
	Brightness	450 cd/m ² (Typical)
	Viewing Angles (L/R/U/D)	85 / 85 / 85 / 85 (Typical)
	Light Source / Lifetime	6CCFL / 50,000Hrs (Minimum)
	Response Time	30 ms (Typical)
Composite Video (Built-In Camera)	Video Mode	NTSC / PAL
	Camera Video Input Level	1.0Vp-p @ 75 ohm
Composite Video (External Camera)	Camera Video Input Connector	BNC x 1
	Video Mode	NTSC / PAL
	Video Input Level	1.0Vp-p @ 75 ohm
Video Output	Video Output Connector	BNC x 4
	Video Output Level	1.0Vp-p @ 75 ohm
Built-In Camera	CCD Image Sensor	1/3" Sony Super HAD CCD
	Resolution	470 TVL
	Sensitivity	1 Lux (F2.0, 50 IRE)
	S/N Ratio	50dB
	Auto Iris	Yes
	Auto White Balance	Yes
	Electronic Shutter	1/60 ~ 1/100,000, 1/50 ~ 1/1000,000 Sec
	VF Lens	4 - 9mm (F 2.0 ~ 2.8)
Audio	Audio Input level	Line level
	Audio Input Connector	RCA x 2
	Audio Amplifier	2.5 W x 2
	Power Supply	DC 12 V
	Power Consumption	60 Watts
	Operating Temperature	0 ~ 40 °C
	Storage Temperature	0 ~ 50 °C
	Case Material	Metal
	Dimensions / Weight	472.4mm x 451.4mm x 89.4mm / 8.9kg(Net) 640mm x 540mm x 190mm / 12.7kg (Gross)
	Accessories	AD-DC Adaptor, Power Cord, Manual, Remote controller Extension Cable for Power (Option)

* Note: Specifications subject to change without notice

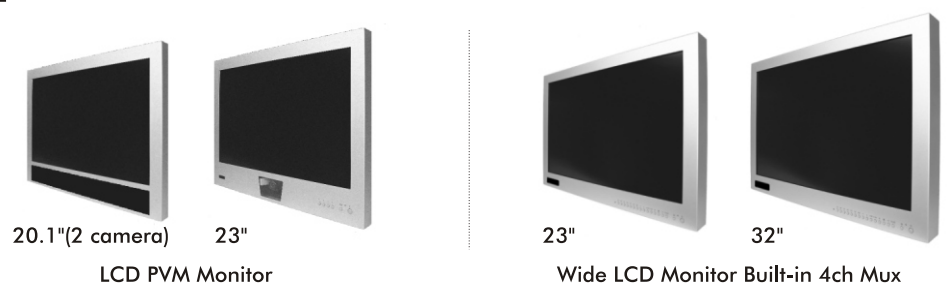
View



Optional Accessories <Wall/Ceiling Bracket>



Optional Product



TFT LCD Public View Monitor